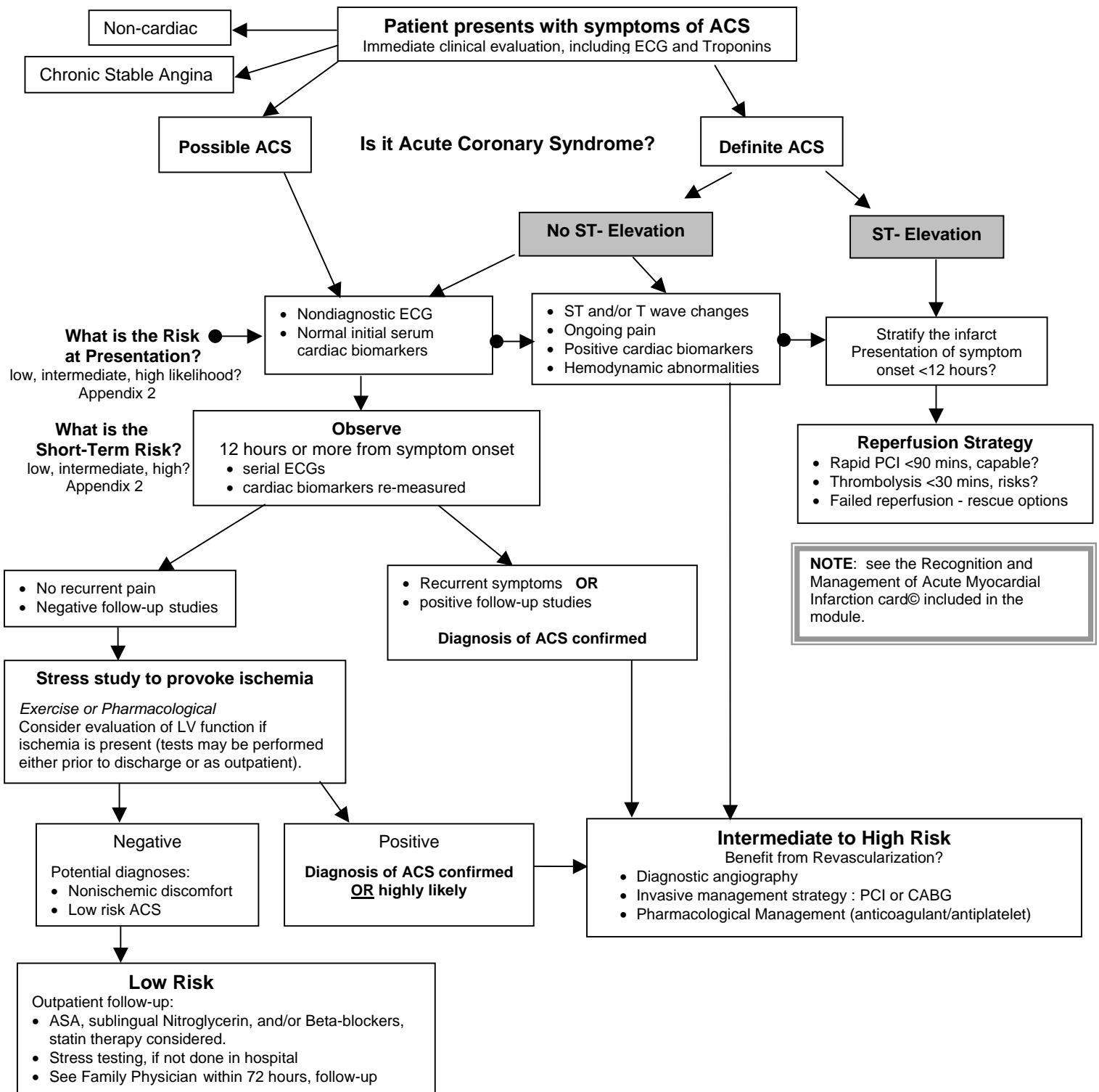


APPENDIX 1. EVALUATING PATIENTS WITH SYMPTOMS OF ACUTE CORONARY SYNDROME (ACS)



NOTE: PCI=Percutaneous coronary intervention; CABG=coronary artery bypass graft surgery.

Adapted from: (1) Antman EM et al. 2007 Focused update of the ACC/AHA 2004 Guidelines for the Management of Patients with ST-Elevation Myocardial Infarction. A report of the American College of Cardiology/American Heart Association Task Force on Practice Guidelines. Circulation 2008;117(2):296-329. (2) Anderson JL et al. ACC/AHA 2007 Guidelines for the Management of Patients with Unstable Angina/Non-ST-Elevation Myocardial Infarction. JACC 2007;50(7):e1-157. (3) Scottish Intercollegiate Guidelines Network. Acute Coronary Syndromes. Guideline 93. Feb 2007. www.sign.ac.uk. Accessed April 2008. (4) Achar SA, Kundu S, Norcross WA. Diagnosis of acute coronary syndrome. Am Fam Physician 2005;72(1):119-126.

© The Foundation for Medical Practice Education, www.fmpe.org

May 2008

