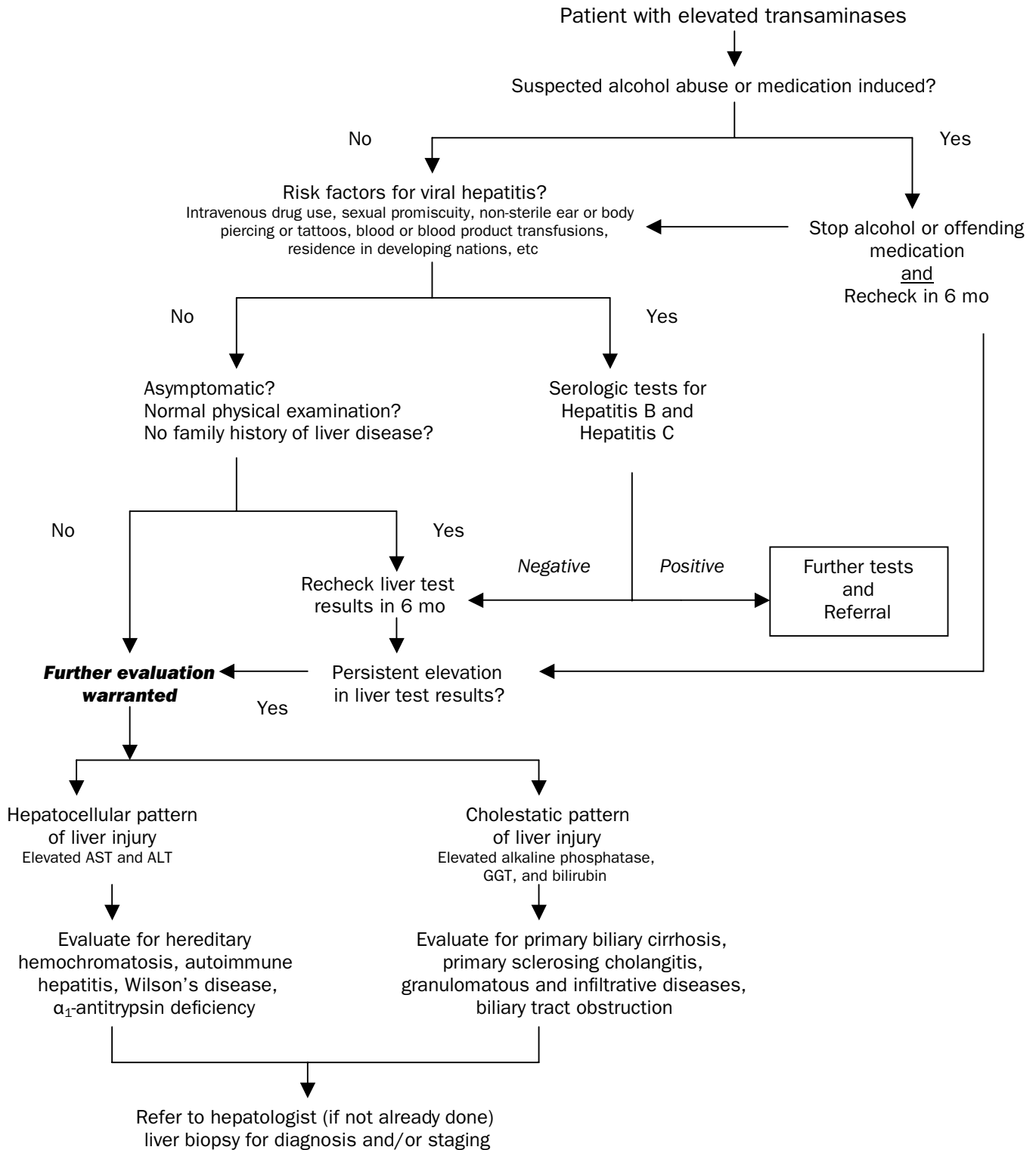


**Appendix 1: Algorithm for initial evaluation of abnormal liver tests**



Adapted from: Limdi JK, Hyde GM. Evaluation of abnormal liver function tests. *Postgrad Med J* 2003; 79: 307-312.; Mallory AM, Lee SW, Kowdley KV. Abnormal liver tests on routine screening. How to evaluate, when to refer for biopsy. *Postgraduate Medicine* 2004; 115 (3 (March)):53-62.

