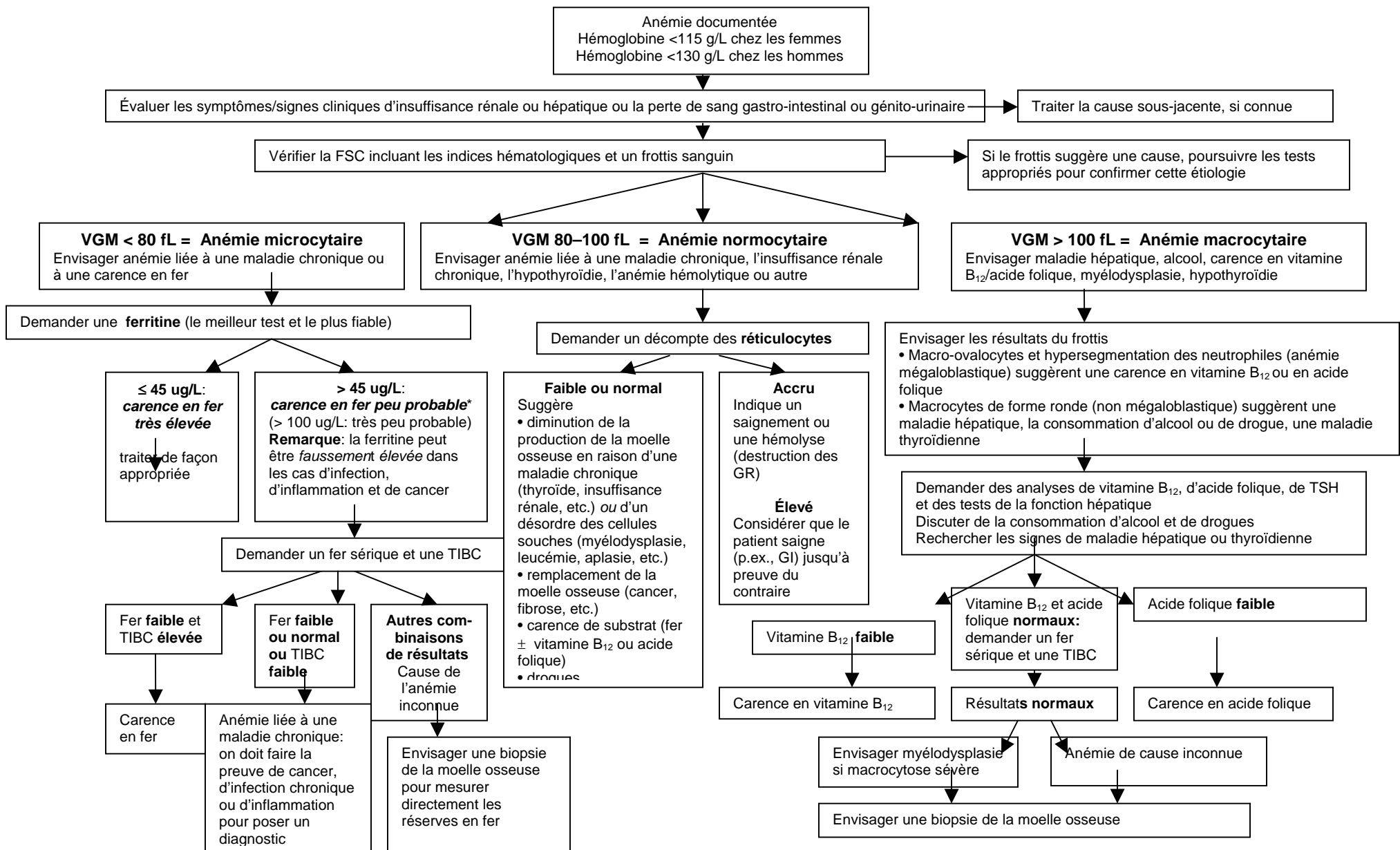


Annexe 2. Évaluation de l'anémie chez les personnes âgées



Sources:

Anemia Review Panel. Guidelines for the management of anemia. 1st. 2004. Toronto, ON, MUMS Guideline Clearinghouse.

Balducci L. Epidemiology of anemia in the elderly: information on diagnostic evaluation. J Am Geriatr Soc 2003; 51(3 Suppl):S2-S9.

© La Fondation pour l'éducation médicale continue, www.fmpe.org